

DECAL[®]
T H I N K G R E E N !

WHERE TO APPLY
WALLCOVERING

WHERE CAN I APPLY DECAL WALLCOVERING

You can place them on any smooth, flat, finished surface. This includes windows, bathrooms, doors, mirrors, whiteboards, furniture... practically anywhere you can think of.

WHERE SHOULDN'T I APPLY DECAL WALLCOVERING?

Rugs, fabrics, clothing, or other textiles are out of the question. The fibres can render the adhesive backing. We also do not recommend applying our Decal Wallcovering to brick, cinder block, or other porous surfaces.

We highly recommend avoiding the application of Decal wallcovering on lacquered furniture, as well as any surface regularly exposed to extreme heat or cold, since this can cause the material to become chipped, brittle, or difficult to remove. Also, never place items decorated with Decal Wallcovering in a dishwasher, oven, or microwave.



CAN I APPLY DECAL WALLCOVERING TO TEXTURED SURFACES

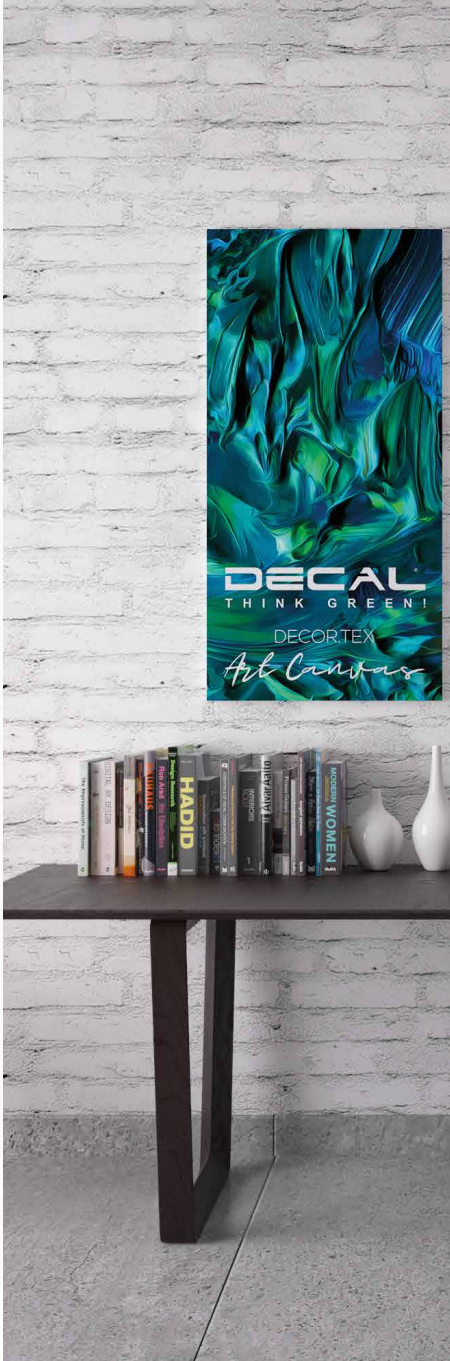
We guarantee Decal Wallcovering will stick to smooth, flat surfaces but cannot guarantee they will stick to textured surfaces.

CAN I APPLY DECAL WALLCOVERING TO A ROOM I JUST PAINTED?

We recommend a 3-week wait between painting and the application of Decal Wallcovering. We're often asked, "Are you serious?"—and we want to reiterate that we are 100% serious about this! In the past, we've found that nothing wrecks Decal Wallcovering faster than fresh paint.

Even if paint feels dry to the touch, it takes a very long time—sometimes several weeks, in fact—to "cure." If Decal Wallcovering is applied before the paint is completely cured, they may curl, peel, or fall off entirely... and it may take some of your paint with it. As a general rule, Do NOT apply Decal wallcovering on freshly painted or papered walls. Let the paint dry for at least 3 weeks. Decal Wallcovering may not work on heavily textured surfaces.

We know it's hard to wait, but the last thing we want is for your brand new Decal Wall to fall off after you've applied it. So sit back, relax, and let that paint do its thing for a little while.



APPLICATION GUIDE

DECAL WALLCOVERING

STEP ONE **SUBSTRATE PREPARATION**

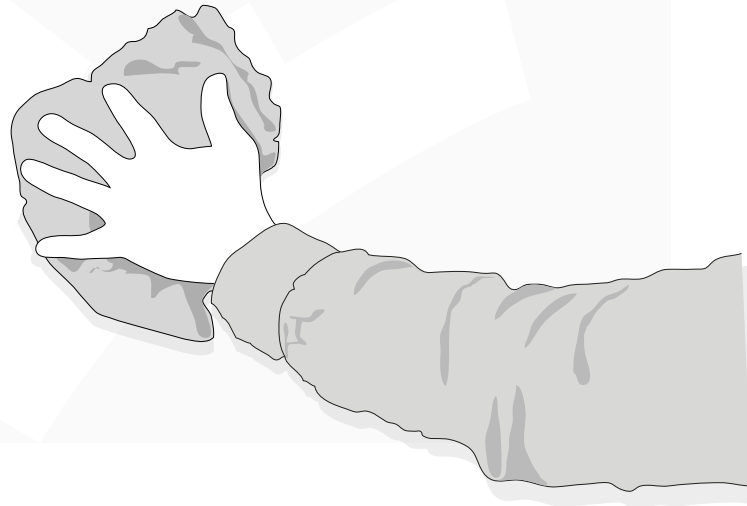
The substrate must be dry, clean and without any remaining pieces from previous wallpaper layers.

If a previous layer of wet glue wallpaper has to be removed, please follow instructions from the wallpaper or wet glue manufacturer.

If necessary, wipe with a soft brush or a clean towel to remove dust or particles on the wall and cut out all irregularities with a utility knife and that could be visible in the freshly applied self-adhesive wallpaper after application.

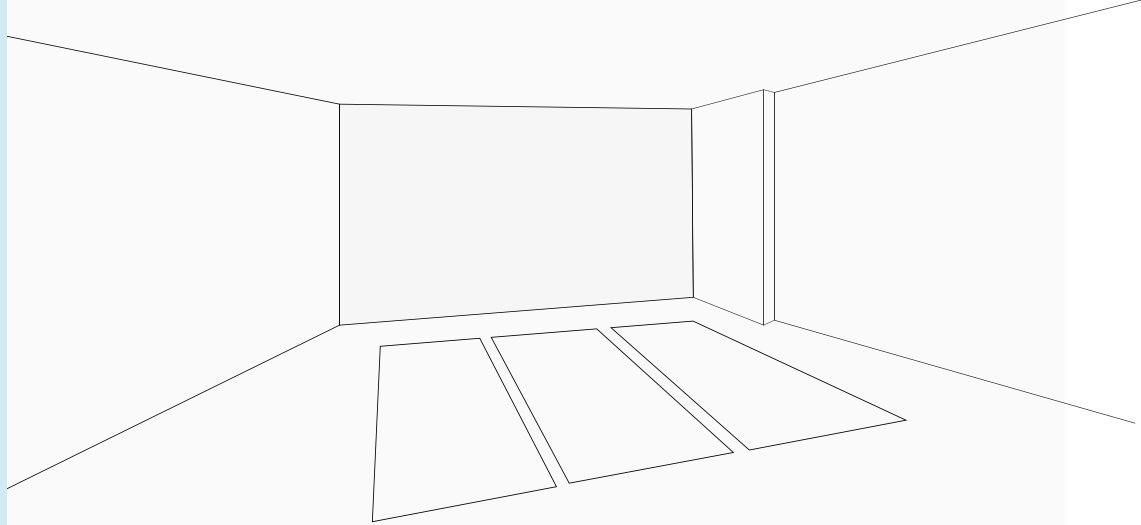
A final wipe down with warm water using a soft towel.

Allow the surface to dry before applying the graphics.

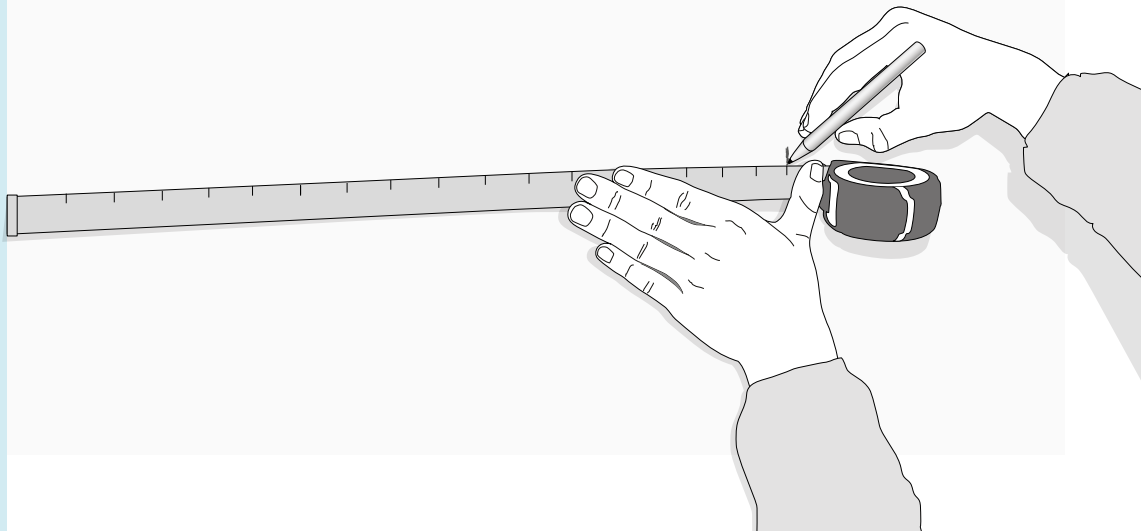


STEP TWO APPLICATION

Before starting the job unroll all the strips and put them in the right order to make sure the tiled image is complete. Eventually, number the strips on the back to avoid errors that could oblige a reprint!

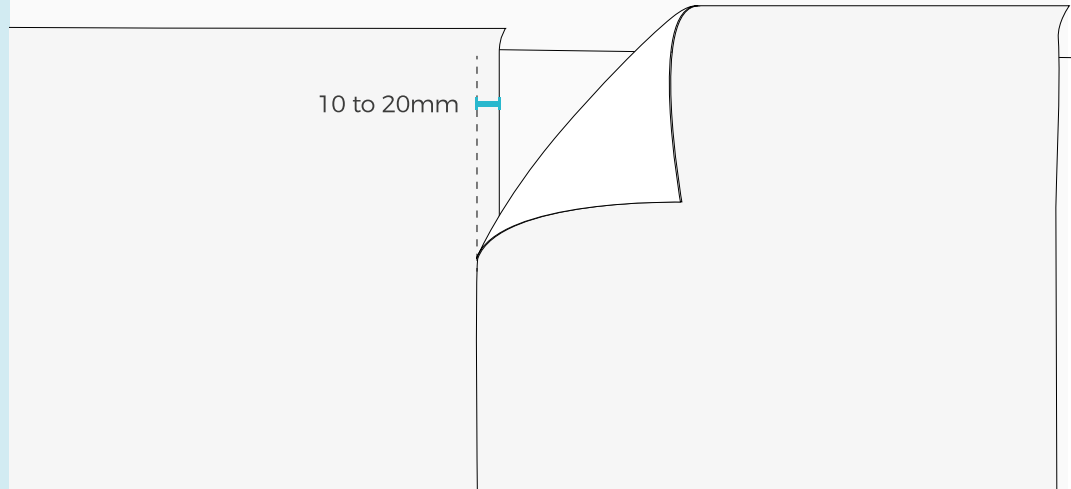


On the first strip, it is vital that the self-adhesive media is hung as vertically as possible as the rest of the job will depend on it.

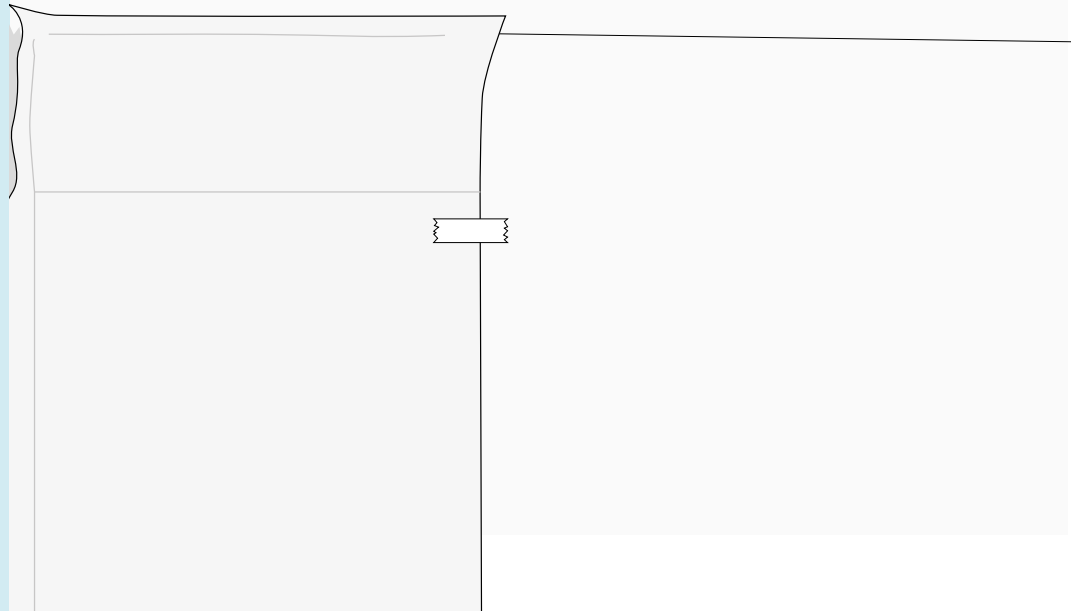




1° When printing, allow enough print to give a 10 to 20mm overlap left and right. Pre-score the backing on either side of the self-adhesive strip.

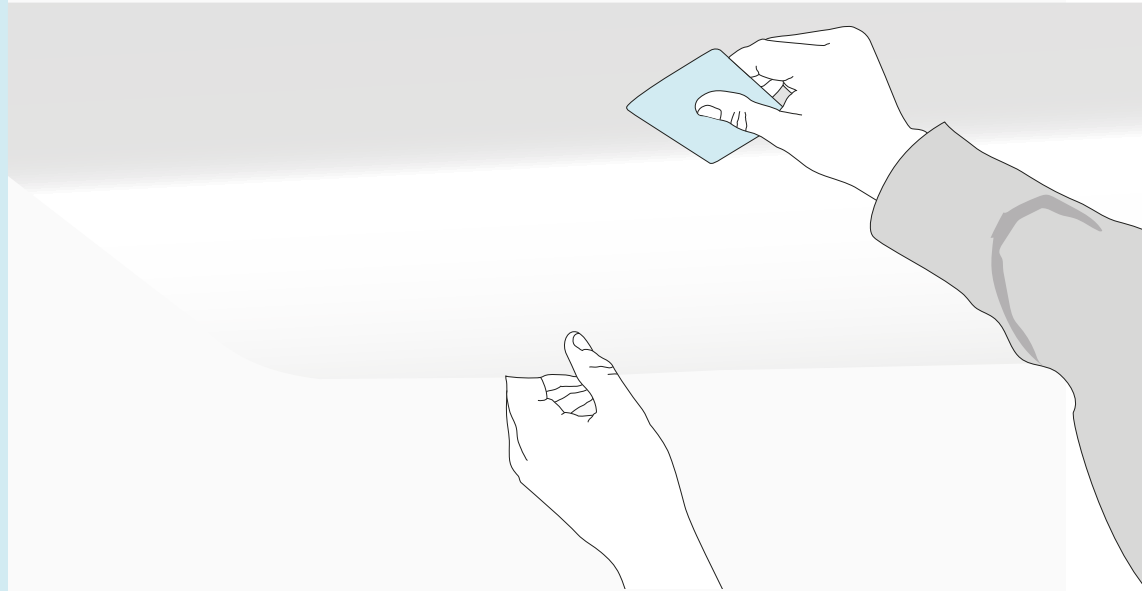


2° Starting from the top, remove the large middle section of the backing on about 50cm over the total width of the material.





3° Press down using a felt squeegee moving your hand from left to right over the printed material. Don't use a plastic squeegee or any other sharp or blunt object to fix the wallpaper since this may damage the print.



Be careful to avoid wrinkles.

Re-positioning of the self-adhesive material is possible, however carefully work your way down removing the backing in strips of 50 to 75cm and pushing from the middle to the outer edges.

VERY IMPORTANT FOR OVERLAPPING PRINTED MATERIAL ALLOW A FEW HOURS DRYING TIME FOR UV PRINTING AND OVER 48 HOURS FOR SOLVENT PRINTING

DECAL[®]
T H I N K G R E E N !